

Mobile Cart ICE-30 Installation	<u>Topics Covered</u> <ul style="list-style-type: none"> ▪ Attaching an ICE-30 to Mobile Cart 	<u>Date Revised</u> 02/13/2023	<u>Revision Number</u> 1
--	--	---	---

Equipment and Tools Needed:

- Electric Screwdriver
- Phillips Screwdriver

Safety Precautions:

Whenever working on an EVSE or other electrical equipment safety is the number one priority, make sure that the charger is de-energized and safe to begin work on.

Required Safety Equipment:

- Safety Glasses
- Safety Gloves

Note:

This mobile cart installation is only for an ICE-30 charger.

[Table of Contents](#)

Guide		
1.1	Installation.....	2

Guide

1.1 Installation



- Once the Mobile cart has been removed from the box and wheels have been installed. Take the blue back plate, and line it up with the mobile cart. Making sure the flat side is facing down on the mobile cart.

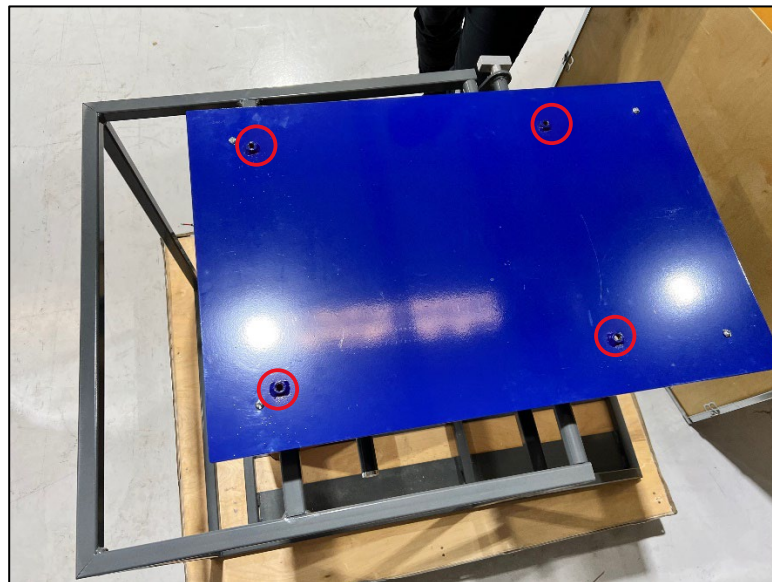


- Once the back plate has been lined up, Screw in the four 1-4'-20 x ¾' the holes that

attach the back plate to the mobile cart.



- Next, place the charger is on its side and attach the two brackets, that were supplied with the ICE-30 charger, on to the back side using the six smaller screws provided in the parts bag. Please note that the large holes on the bracket should be on the south side, while the tracks face north.



- Next, take the four 3/8-16 x 3/4" screws, and install them into remaining four holes on the backplate. Please note that the screws should only be tightened enough to allow the bracket to slide in place, and not tightened all the way.

- Once completed, have three people to move the charger (two carrying the charger and one holding the cords) safely guide the charger brackets into the back plate that mounted onto the cart.
- Carefully slide the charger into the lock position.

