

	Topics Covered	Date Revised	Revision Number
Terra AC Pedestal Installation Guide	<ul style="list-style-type: none"> ▪ Cover Removal ▪ Mounting 	02/14/2023	1

Equipment and Tools Needed:

- Screwdriver or Electric drill with proper bits (Phillips Head, T15, T25) operating between a setting off 7 – 10)

Safety Precautions:

Whenever working on an EVSE or other electrical equipment safety is the number one priority, make sure that the charger is de-energized and safe to begin work on. It is required to have at least two people during this installation process.

Required Safety Equipment:

- Safety Gloves
- Safety Glasses

Table of Contents

Installation..... 2

 1.) Cover Removal 2

 2.) Mounting 4

Installation

1.) Cover Removal

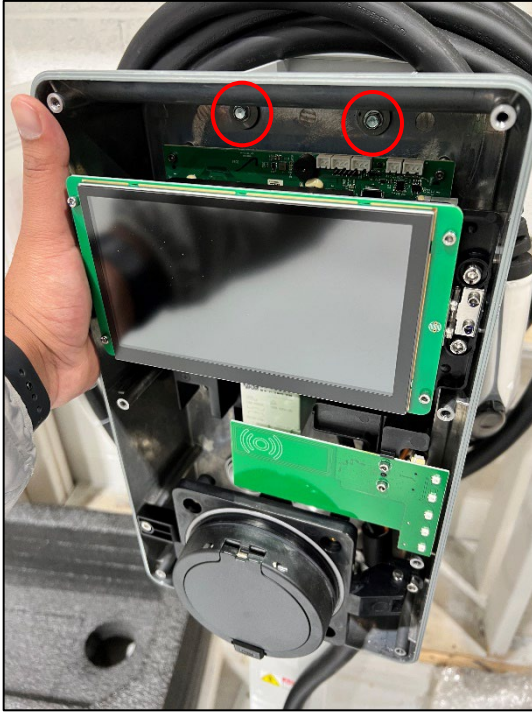


- Once the device has been removed from the box, start by removing the two T24 security screws from the bottom of the white cover.



- After the white cover has been removed, remove the clear cover by unscrewing the 11 T15 security screws to pull the cover off the charger.

2.) Mounting



- While the covers are removed, hold the charger up to the pedestal and make your marks with the top two mounting holes. Then insert two self-tapping screws into the marked holes to mount the charger.
- It is important to note that the top screws are mounted slightly lower than 1 inch (Ideally 1.25in), to allow the top black cover to be placed on and still maintain ADA compliance.
- A helpful tip to make sure the charger is leveled is to use a level along with making sure the back fins of the charger are lining up with the pedestal.



- Once the top two self-tapping screws have been inserted and the charger is leveled, insert the remaining two self-tapping screws into the bottom section of the charger.
- Reinsert the 11 T15 screws to resecure the clear plastic cover onto the charger. (Reverse steps of section one)
- Place the white cover on top of the clear cover and make sure it snaps back into place before inserting the two T25 screws to secure the white cover back onto the charger.



- Please note that this installation process is used for both single and back to back mounting.