

	Topics Covered	Date Revised	Revision Number
Pedestal A Installation guide	<ul style="list-style-type: none"> ▪ Pedestal assembly ▪ ICE 30 Mounting 	06/28/2023	1

Equipment and Tools Needed:

- Electric Drill (Phillips Head Bit)
- Wrench

Safety Precautions:

Whenever working on an EVSE or other electrical equipment safety is the number one priority, make sure that the charger is de-energized and safe to begin work on. It is required to have at least two people during this installation process.

Required Safety Equipment:

- Work Boots
- Safety Gloves
- Safety Glasses

Table of Contents

Pedestal A Installation guide..... 2

 1.) Bottom Cover Installation 2

 2.) Charger Mounting 3

 3.) Rear Covers Installation 4

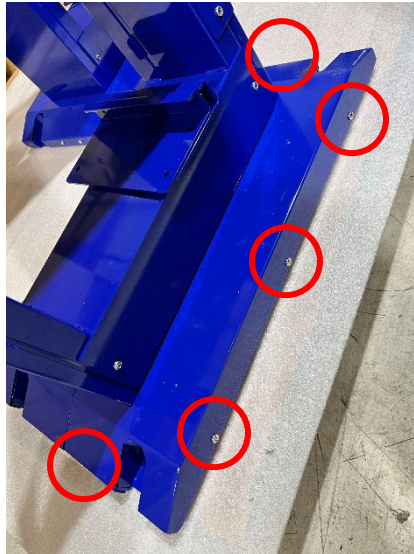
 4.) Wing and Holster Installation 5

Pedestal A Installation guide

1.) Bottom Cover Installation



- Once the pedestal has been mounted to the ground. Take the two blue U covers and lace the covers on the bottom of the pedestal to cover the base.



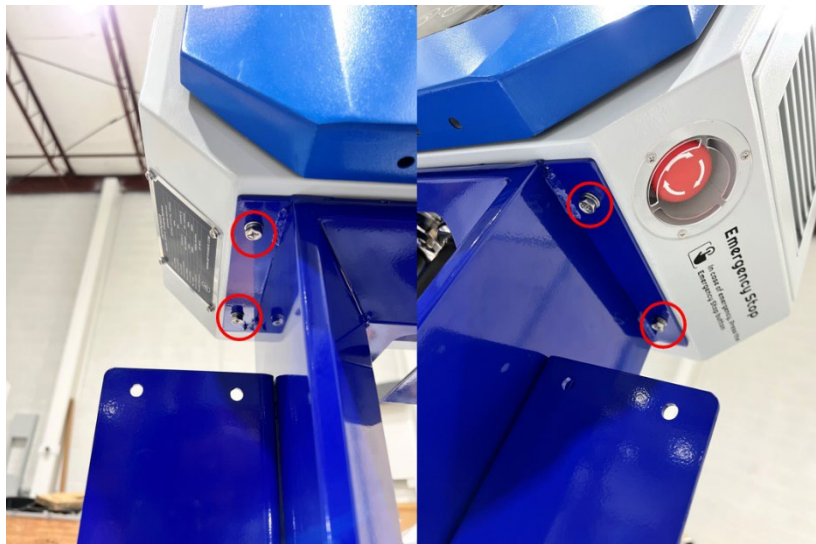
- Insert and screw in 5 of provided screws per side to secure U covers in place.

2.) Charger Mounting

- With two or three people. Carefully lift the charger onto the pedestal, so that the cables fit into the existing cut out.



- Align the charger's mounting points with the pedestals mounting holes with 4 of the provided screws.



3.) Rear Covers Installation



- After the AC Input wires have been installed through the bottom and right side of the pedestal. Place the remaining covers on the pedestal using 7 of the provided screws.



4.) Wing and Holster Installation

- Using the remaining 6 screws provided, mount the wings on the pedestal, one on both side using 3 screws to secure in place per side.



- Using the bolts provided, secure the two holsters in place on the pedestal.



